

## Leyenda de una herencia

# Mas La Plana

2016

**DO:** Penedès

**Grape varieties:** Cabernet Sauvignon from the parcels of the Mas La Plana vineyard

**Date grapes picked:** From the 5th of October

**Winemaking:**

**Number of days of skin contact:** 15-25 days

**Type of fermentation:** In temperature-controlled stainless steel tanks and oak foudres

**Length of alcoholic fermentation:** 7 days

**Fermentation temperature:** 25-28°C

**Ageing:** 18 months in French oak (65% new)

**Bottling month:** June of 2018

**Technical data:**

**Alcohol level:** 14.5% vol.

**pH:** 3.34

**Total acidity:** 5.8 g/L (tartaric a.)

**Residual sugar:** <0.5 g/L

**Allergy advice:** Contains sulfites

**Stored under the right conditions, the wine will hold its potential for the next:** 10-15 years

**The following number of bottles have been produced in this vintage:**

**Borgoñesa (75 cl):** 100.764

**Magnum (150 cl):** 1.816

**Jeroboam (300 cl):** 139

**Matusalem (600 cl):** 22

**Nabucodonosor (1500 cl):** 4

**Vintage comments:**

Generally speaking, 2016 was a dry year, especially during the summer months when rainfall levels were 64% below average.

Temperatures were regular, and despite a cool growth season, they fell within normal range during maturation.

**Awards:**

- 2017 vintage: 97 points, Decanter Wine Awards 2021
- 2017 vintage: 95 points, JamesSuckling.com 2021
- 2016 vintage: 94 points, 100% Blind Tasted - Andreas Larsson 2021
- 2016 vintage: 94 points, VINOUS - Joshua Raynolds 2021
- 2016 vintage: 92 points, Wine Spectator 2021
- 2016 vintage: 95 points, JamesSuckling.com 2020
- 2016 vintage: 94 points, Decanter 2020
- 2016 vintage: 93 points, JamesSuckling.com 2020
- 2015 vintage: 97 points, Wine Enthusiast 2021
- 2015 vintage: 97 points, Wine Enthusiast 2020



*Antología.*  
**MIGUEL TORRES**  
*Desde 1878*





**Year vines planted:** 1964-1979

**Surface area:** 29 ha/72 acres

**Elevation:** 225 m

**Slope:** 0-5%

**Orientation:** SE

**Yield:** 4.255 Kg/ha. Grape clusters are selected manually

**Soil:**

Deep, yellowish grey-brown alluvial soils that are well drained and have a moderate water holding capacity. Made up of interbedded layers of gravel, sand, and clay.

**Precipitation:**

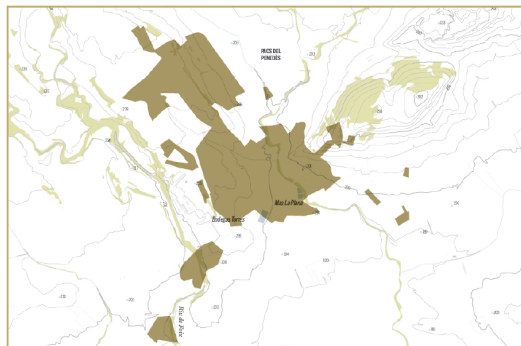
Annual average (historical): 516 mm

Annual total (current vintage): 474.6 mm

**Temperature:**

Annual average (historical): 14.3°C

Annual average (current vintage): 14.7°C



**Estate of origin:** Mas La Plana

**Location:** Alt Penedès, Catalunya

**Story:** The first vintage of this wine dates back to 1970 in its beginnings the wines included small quantities of Tempranillo, the main variety was always Cabernet Sauvignon.

